

Sign up to Receive Our Newsletter

Name

Email

Submit

do-it-yourself-help.com

 Web This Site

Painting Projects

[Paint Stripes on Walls](#)
[Paint White Ceiling](#)
[Paint Touch-up](#)
[Paint High Ceilings](#)
[Painting a Stairwell Ceiling](#)
[Interior Decorating Ideas](#)
[Interior Painting Ideas](#)
[Interior Painting Preparation](#)
[Painting a Room](#)
[Caulking Techniques](#)
[Painting Preparation](#)
[Painting Trim](#)
[Paint Raised-Panel Doors](#)
[Paint Brushing Techniques](#)
[Paint Rolling Techniques](#)
[Painting Kitchen Cabinets](#)
[Painting a Bathroom](#)
[About Lead-Based Paint](#)
[Repainting Lead-Based Paint](#)
[Exterior Painting Guide](#)
[Painting Tips](#)

Faux Painting Projects

[Faux Painting Techniques](#)
[Faux Painting Glaze](#)
[Faux Painting Prep](#)
[Faux Sponge Painting](#)
[Faux Rag Painting](#)
[Frottage Wall Painting](#)
[Faux Dragging Techniques](#)
[Faux Painting Stone](#)
[Faux Crackle Painting](#)

Drywall and Plaster Repairs

[Repair Bubbling Paint](#)
[Repair Torn Drywall Paper](#)
[Drywall Repair Nail Pops](#)
[Drywall Repair Small Holes](#)
[Drywall Repair Large Holes](#)
[Drywall Repair Ceiling Holes](#)
[Drywall Crack Repair](#)
[Caulking Wall Cracks](#)
[Drywall Ceiling Installation](#)
[Drywall Finishing Seams](#)
[Drywall Finishing Corner Bead](#)
[Drywall Finishing Inside Corners](#)
[Drywall Repair Water Stains](#)
[Drywall Repair Water Damage](#)
[Plaster Repair Water Damage](#)
[Repair Lath Plaster](#)
[Repair Loose Plaster](#)
[Repair Plaster Key](#)
[Skim Coating Techniques](#)
[Wallpaper Removal](#)
[Patching Stucco Walls](#)
[About Drywall Textures](#)
[Repair Drywall Texture](#)
[Removing a Drywall Texture](#)
[Painting Drywall Texture](#)
[Matching a Drywall Texture](#)

Wall Materials Guides

[Wall Tools and Materials](#)
[Cleaning Brushes and Rollers](#)
[Sandpaper Guide](#)
[Sanding Joint Compound](#)
[Choosing House Paint](#)

Home

Ads by Google

[Cable for Power](#)
[Flexible Wiring](#)
[Lithonia Wiring](#)
[NEMA Wiring](#)
[Plenum Wiring](#)

Ads by Google

Electrical Repair/Replace
 Troubleshooting
 25+ yrs exp. /
 Consult Available
www.jwilton.com

Magnepull Wire Fish Kit

Kit Includes a
 Free Training
 DVD! Includes
 Brand New Heavy
 Duty Case
www.TechToolSupply.com

Electrical Outlet Wiring

Expert
 Electricians. 24/7
 Service. Call
 Today. SF Bay
 Area.
www.baycitieselectric.com

Find Drywall Contractors

Read Reviews &
 Get Quotes From
 Local Contractors.
 Free Search!
www.ServiceMagic.co

Cable Installation

Bay Area's Top Cabling Contractor Get Fast Estimates & Installations!

Chinese Drywall Victims

Get The Legal Help You Need Today. Instant Case Review. 800-LAW-INFO

Ads by Google

Also see:

[Finding an Electrical Source](#)
[Splicing Wires](#)
[Measuring Circuit Amps](#)
[Wiring Behind Baseboards](#)

Fishing Wiring Through Walls

This is page 2 of this article. Go back to [Finding an Electrical Source](#) for help finding a source for your new outlet.

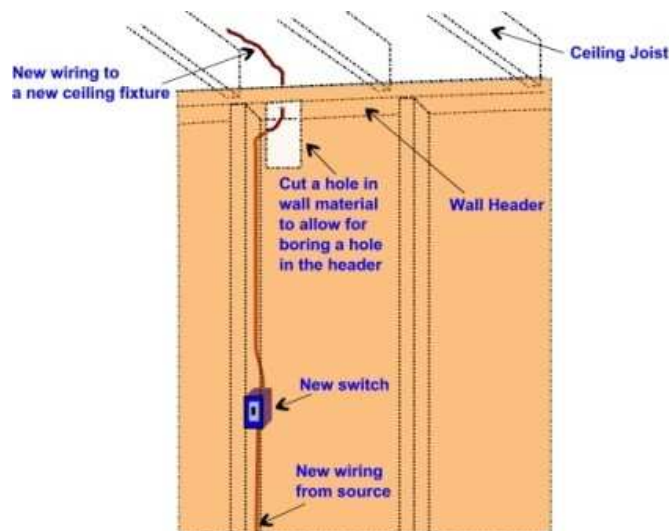
Cut drywall and gypsum board plaster using a [drywall saw](#). Cut holes in [lath plaster](#) using a [reciprocating](#) or [keyhole saw](#). See [Repairing Large Holes](#) or [Repair Larger Holes2](#) for help with plaster and drywall repairs after the new cable is run.

Cut the Necessary Holes to Run the New Cable

Determine inside of which walls and ceilings the cable must be run. For example, with a new ceiling fixture using a source from an existing wall receptacle, the cable will have to be run inside the wall cavity, through the wall header and into the ceiling cavity to the new fixture. Or if you are using a receptacle on an upper floor to serve a ceiling fixture below, the cable would have to be run through the sole plate and flooring and into the ceiling cavity below.

Mark and cut the holes for the new outlet boxes using the box as a template. Before installing the box use the hole to aid in running the new cable. Decide where it will be necessary to cut holes in walls and ceilings to allow for boring holes in the framing. Mark and cut a 6 inch wide by 12 inch long rectangle on the wall material at ceilings to allow access to the header. Mark and cut a 6 by 12 inch hole about an inch above baseboards to bore holes in the sole plate and flooring. These are the minimum sized opening needed to run the cable, if necessary, cut away extra wall material to allow room for reaching into the wall or ceiling cavity to bore holes and reach cable.

Bore the holes for the cable in the framing using a high torque drill or hand auger and a 3/4 inch bit for [NM cable](#) and 1 inch for [armored cable](#) or [greenfield](#).



Ads by Google

Ftp cable

Low Cost On
Cat5e STP Burial
Cable Cat5E
Outdoor Cable
\$104
www.cyberxlink.com

**Pass Through
Wall Plates**

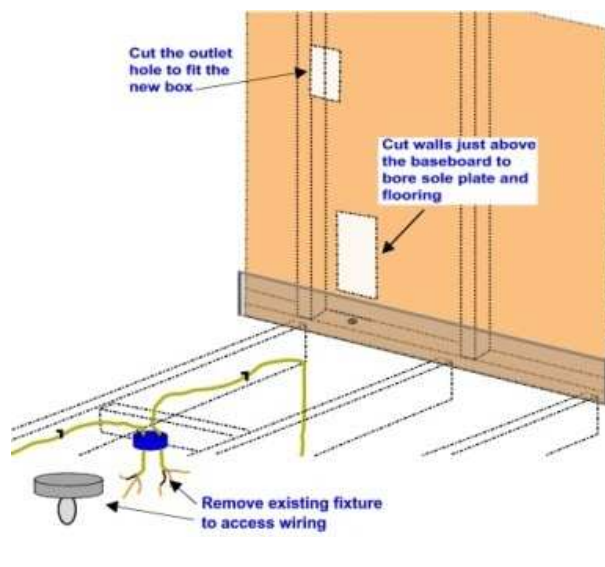
Get Perfect Audio
Video Connection
With No Signal
Loss. From \$2.49
www.MyCableMart.co

**PowerBridge
for the DIYer**

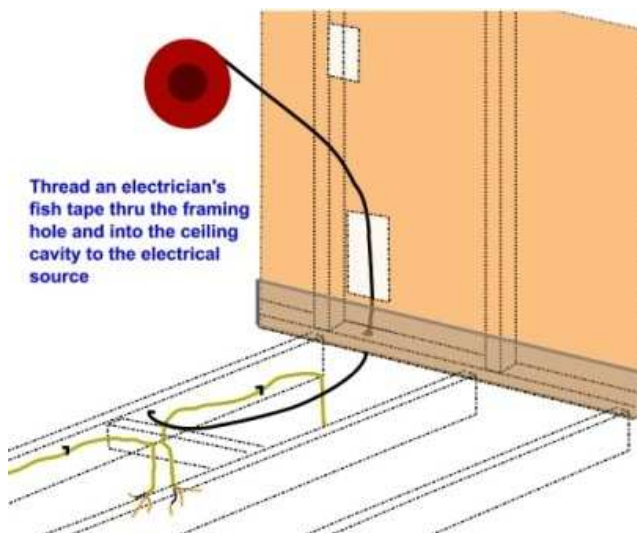
Easy In-Wall
Power for LCD,
Plasma Wall
Mount, Free
Shipping
RamElectronics.Net

**Submarine
Telcoms Forum**

dedicated
magazine and
RSS Feed and
Voice of the
Industry
subtelforum.com

**Fishing the Cable Through Walls and Ceilings**

Thread an electrician's fish tape through the first framing hole and to the electrical source. You will need to remove the outlet box at the source to access the end of the fish tape. Tape several inches of the new cable to the fish tape keeping the bundle small enough to pass through the framing hole. Tape the end of the cable down so it doesn't catch as it enters the hole.



Pull the cable into the wall cavity and through the first framing hole. Pull some excess cable into the room and then cut the cable free from the fish tape. Move to the next opening in the run. Fish the tape through the framing hole and wall to reach the new cable. Tape the end of the cable to the fish tape and pull it through to the next opening. Pull extra cable through and cut the it free from the fish tape and move to the next opening. Use this method at each point in the run.

Tips for Fishing the Cable

If the fish tape hits an obstruction inside the wall turn the the rolled coil one way or the other and try to push past the obstacle. Because the fish tape is a rigid, flat wire, it is bowed in the direction of the coil. Turning the coil will turn the end of the tape in the same direction.

It can be a tricky process to make all the necessary turns in the cable. Cut more holes in the wall and ceiling covering if necessary to reach the cable and pull it by hand. Pull enough extra cable on both ends of the new run to allow for splicing, etc. About 12 inches is usually enough.

Connect All New Wiring

Install a cable clamp in one of the holes in the new outlet box and pull the cable through it. Tighten the clamp leaving about 10 inches of cable hanging from the box. Install the box in the wall opening. Connect the wires at both ends of the run. See [Wire Splicing](#) and [Installing Receptacles and Switches](#) for help. When all new wiring is complete turn the power on to the circuit. Test to be sure that all the wiring is correct. Test any receptacles with a [receptacle analyzer](#) and switch lights on and off. Shut the power off to the circuit again and fasten all receptacles, fixtures and cover plates tightly in place. Turn the power back on to the circuit.

Go back to [Finding an Electrical Source](#) for help finding a source for your new outlet.

[Choosing Wall Panel](#)
[Paint Coatings Defined](#)
[Primers and Sealers](#)
[Paint Thinners and Solvents](#)
[Bleaches and Stains](#)

Electrical Wiring Projects

[Wiring a Ceiling Fan/Light](#)
[Wiring Receptacles](#)
[Wiring Switches](#)
[Wiring 3-Way Switches](#)
[Wiring 4-Way Switches](#)
[Lamp Switch Diagrams](#)
[Replace Receptacles and Switches](#)
[Measuring Circuit Amps](#)
[Finding an Electrical Source](#)
[>Fishing Wiring in Walls](#)
[Wiring Behind Baseboards](#)
[Splicing Wires](#)
[Replace a Lamp Cord](#)
[Splice a Lamp Cord](#)
[Hanging a Ceiling Fixture](#)
[Add a New Ceiling Fixture](#)

Remodeling Projects

[Framing an Interior Wall](#)
[Wall Remodeling](#)
[Installing Doors and Windows](#)
[Framing Doors and Windows](#)
[Crown Molding Installation](#)
[Crown Molding Lighting](#)
[Trim Molding Guide](#)
[Custom Molding Ideas](#)
[Lumber and Plywood Guide](#)
[Wood Joinery Guide](#)

Tool Guides

[Compound Miter Saw Guide](#)
[Belt Sander Guide](#)
[Drill/Driver Guide](#)
[Drill Press Guide](#)
[Wood Router Guide](#)
[Cordless Battery Guide](#)
[Wood Working Tools Guide](#)
[Electrical Guide](#)
[Plumbing Guide](#)

Home Repair Projects

[Repair Rotted Wood](#)
[Repair Squeaking Floors](#)
[Repair Loose Bricks](#)
[Double Hung Window Repair](#)
[Caulking Showers and Tubs](#)
[Caulking Counter Cracks](#)
[Repair Leaky Pipes](#)
[Install Wall Access Panel](#)
[Choosing Wall Anchors](#)
[Using Wall Anchors](#)
[Using Adhesives](#)
[Install Weather Stripping](#)
[Concrete and Mortar Defined](#)
[About Masonry Coatings](#)
[Painting Masonry](#)
[About Masonry Damage](#)
[Repairing Masonry Cracks](#)

House Cleaning

[Stain Cleaning Tips](#)
[Cleaning Fluids](#)
[Clean These Surfaces](#)
[Clean These Stains](#)
[Cleaning Techniques](#)
[Removing Tough Stains](#)
[Cleaning Marble](#)

[Return to Top](#)

[Ads by Google](#) [Ceiling Lamps](#) [Durham Drywall](#) [NEMA Wiring](#) [Plenum Wiring](#)

[Link to Us](#) [Advertise](#) [Ask a Question](#) [Site Map](#) [Resources](#) [Policy](#)

Copyright ©2006-2009 do-it-yourself-help.com